

HeatReg Smart

CE UK CA IP21



220-240V, 50/60Hz, 13A 3000W, Ta -20°C - +35°C, To +5°C - +35°C, Operating Frequency: 2402-2480MHz, Maximum Radio Frequency Output Power: 2dBm

SG Smart

GET IT ON
Google Play

Download on the
App Store

Range: 10m in open air

CLICK!

0,5-4,0 mm² 6mm

- SG 12kΩ
- CTM 47kΩ
- Devi 15kΩ
- Elko 10kΩ
- Ebeco 10kΩ
- MicroMatic 12kΩ
- OJ 12kΩ
- Schneider 10kΩ

CLICK! CLICK!

1st time

30s

NO: Kan kun installeres og vedlikeholdes av en registrert installasjonsvirksomhet.

DK: Må kun installeres og vedligeholdes af uddannet elektriker.

SE: Skall installeras och underhållas av behörig elektriker.

EN: Only to be installed and maintained by an authorized electrician.

FR: Doit être installé et maintenu par un électricien qualifié.

NL: Mag alleen geïnstalleerd en onderhouden worden door een bevoegde electricien.

DE: Dieses Produkt darf nur durch autorisiertes Personal (z.B. Elektro-Installateur) angeschlossen, in Betrieb genommen und gewartet werden.

FI: Asentaa ja huoltaa saa vain valtuutettu sähköasentaja

NO: Skru av strømmen før montering.

DK: Sluk for strømmen inden montering.

SE: Stäng av strömmen innan montering.

EN: Turn off power before installing.

FR: Couper le courant avant l'installation.

NL: Stroom uitschakelen voor u het toestel installeert.

DE: Vor Installationsarbeiten den Strom abschalten.

FI: Sammuta virta ennen kytkemistä

NORWAY
SG Armaturen AS

Skytterheia 25
N-4790 Lillesand

Tel: +47 37 50 03 00
firmapost@sg-as.no
www.sg-as.no

SWEDEN
SG Armaturen AB
Tel: +46 31 81 71 10
info@sg-ab.se
www.sg-ab.se

FINLAND
SG Armaturen Oy
Tel: +358 02 07 30 39 60
info@sg-oy.fi
www.sg-oy.fi

DENMARK
SG Armaturen A/S
Tel: +45 70 70 72 13
info@sg-as.dk
www.sg-as.dk

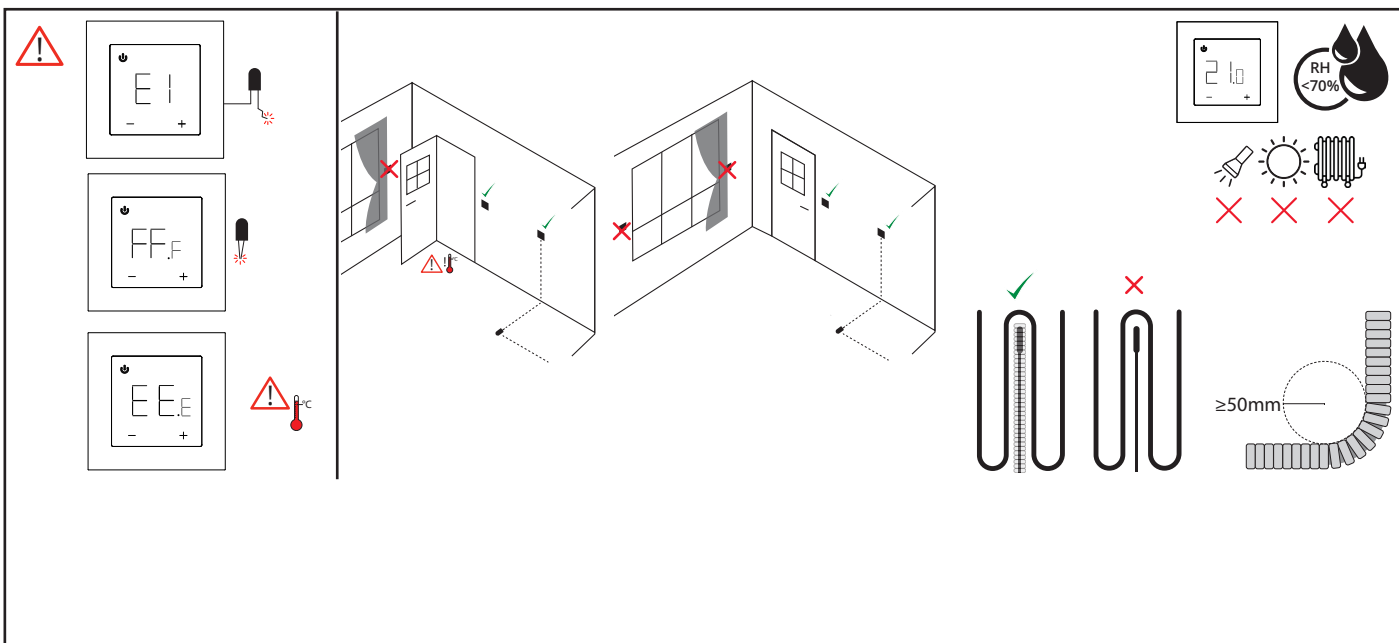
UNITED KINGDOM
SG Lighting LTD
Tel: +47 37 50 03 00
info@sglighting.co.uk
www.sglighting.co.uk

FRANCE
SG Lighting SA/NV
Tel: +33(0) 4 94 93 00 00
info.france@sglighting.fr
www.sglighting.net

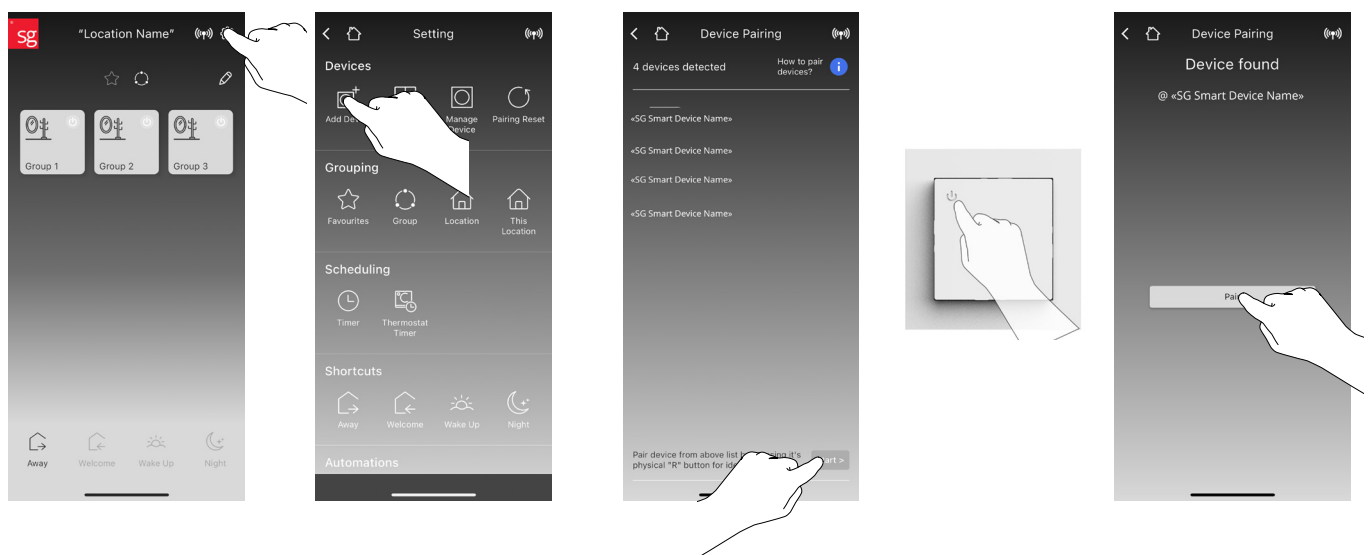
BENELUX
SG Lighting SA/NV
Tel: +32(0) 15 20 72 71
info.benelux@sglighting.net
www.sglighting.net

GERMANY
SG Leuchten GmbH
Tel: +49 40 23 99 44 59
info@sg-leuchten.de
www.sg-leuchten.de

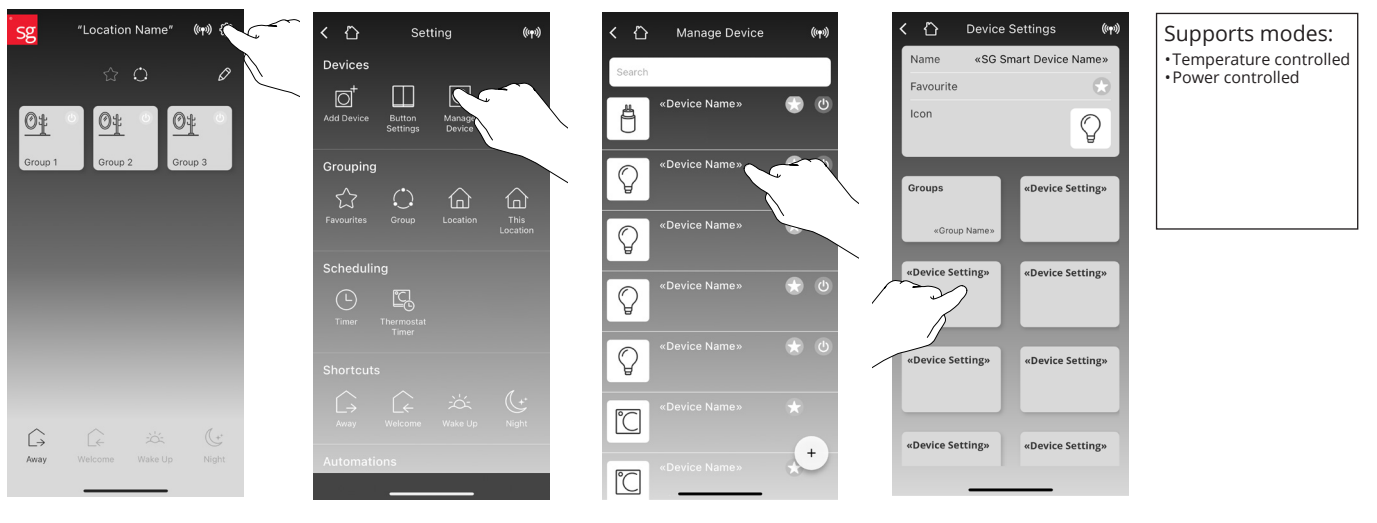
INTERNATIONAL
SG Lighting Co Ltd.
Tel: +86 769 88 49 20 88
cindy@sgdgc.com
www.sg-as.com



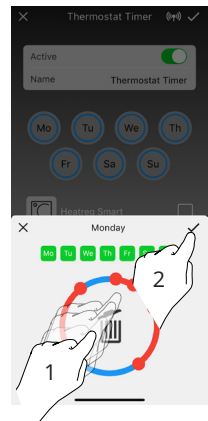
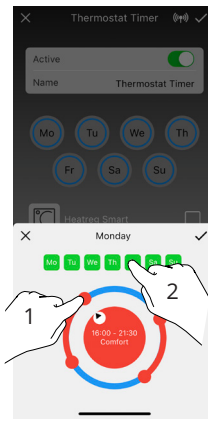
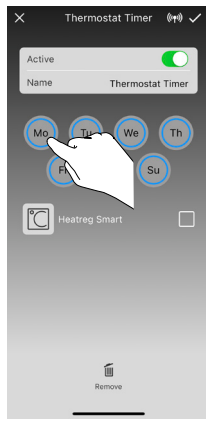
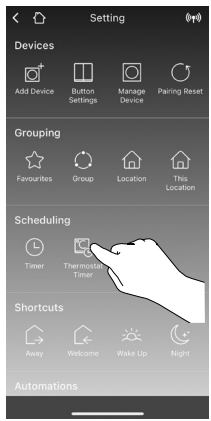
Pairing



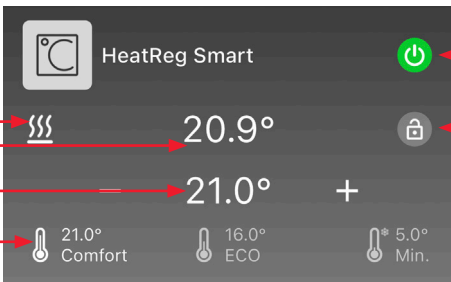
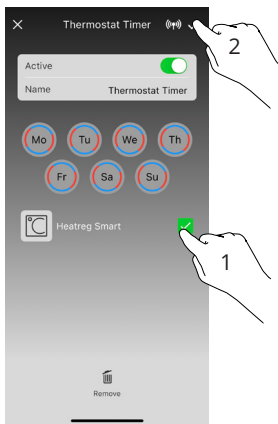
Settings



Thermostat Timer



Delete time frame.
Pull point into middle.



1:
NO: Ønsket temperatur
DK: Ønsket temperatur
SE: Önskad temperatur
EN: Threshold regulation
FR: Température souhaitée
NL: Gewenste temperatuur
DE: Gewünschte Temperatur
FI: Haluttu lämpötila

2:
NO: Termostat av/på
DK: Tænd/sluk termostat
SE: På/av termostat
EN: ON/OFF thermostat
FR: Thermostat marche / arrêt
NL: Aan / uit thermostaat
DE: Ein / Aus-Thermostat
FI: On/off termostaatti

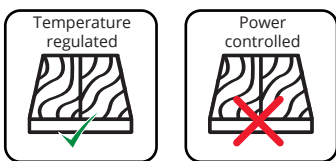
3:
NO: Nåværende temperatur
DK: Nuværende temperatur
SE: Aktuell temperatur
EN: Current temperature
FR: Température actuelle
NL: Huidige temperatuur
DE: Aktuelle Temperatur
FI: Nykyinen lämpötila

4:
NO: Forhåndsinnstilt nivå
DK: Forudindstillet niveauer
SE: Förinställda nivåer
EN: Predefined thresholds
FR: Niveaux pré-réglés
NL: Vooraf ingestelde niveaus
DE: Voreingestellte Ebenen
FI: Esiasetetut tasot

5:
NO: Åpent vindu/ varme
DK: Åbn vindue/kalder på varme
SE: Öppet fönster/ uppvärmning
EN: Open window/heating
FR: Fenêtre ouverte/ chauffage
NL: Open raam/ verwarming
DE: Fenster öffnen/ Heizung
FI: Avoin ikkuna/ lämmitys

6:
NO: Barnesikring
DK: Børnesikring
SE: Barnlås
EN: Child lock
FR: Sécurité enfant
NL: Kinderslot
DE: Kindersicherung
FI: Lapsilukko

Wood floor



Resistive load: Max13A / 3000VA @ 230V

Inductive load: Max 1A power factor 0.3



Concrete floor

